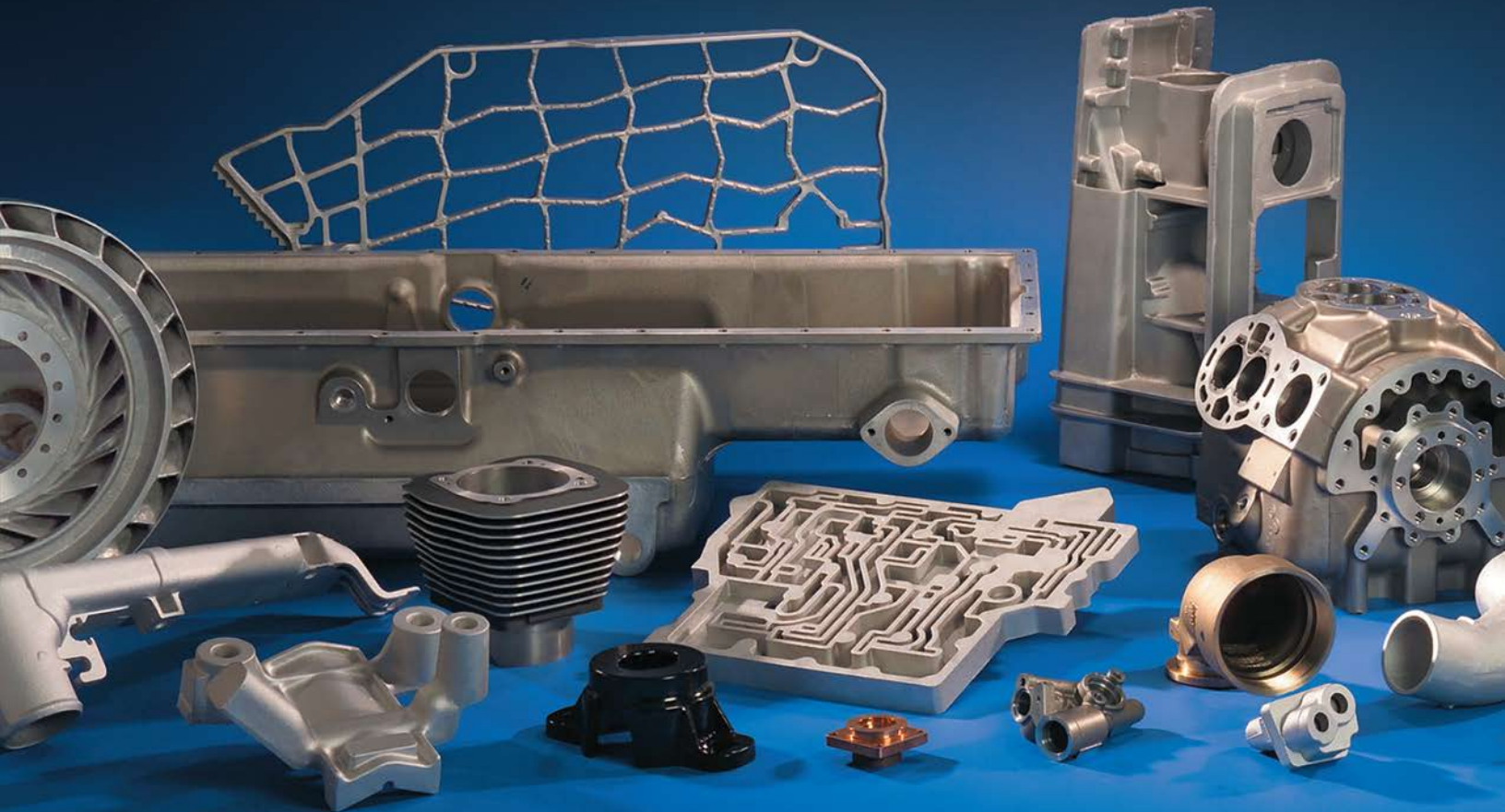


# WISCONSIN ALUMINUM FOUNDRY

**WAF**

Est. 1909



**NON-FERROUS SAND AND PERMANENT MOLD FOUNDRY**

# GREEN SAND

A casting process that is versatile for low to high volume programs.

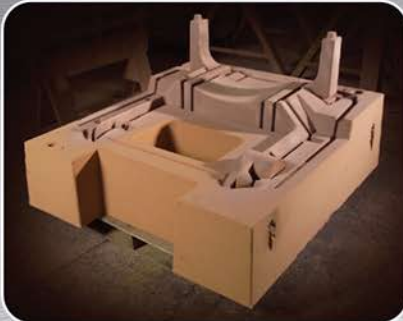


- Extremely flexible - Prototypes to production
- Two DISA 20" x 24" automated molding lines
- Hunter - 30" x 32" automated molding lines
- Cope & Drag - flask sizes up to 30" x 44"

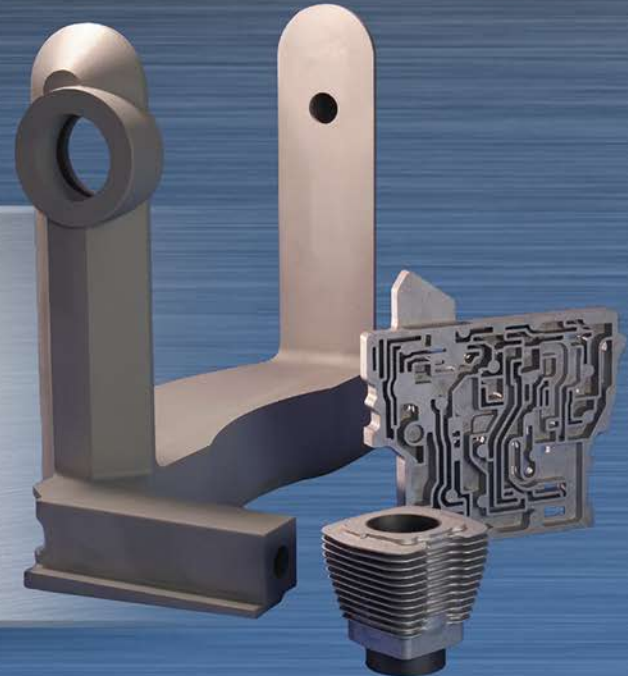


# AIR SET / DRY SAND

A casting process that is suited for complex designs in virtually any size.



- Prototypes to production
- Allows for castings of any size and weight
- Adaptable for highly complex parts
- Accurate and reliable, with an excellent surface finish



# PERMANENT MOLD

A casting process which provides excellent dimensional stability.

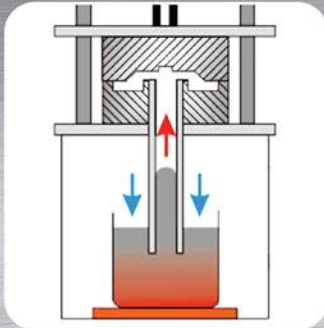


- Tilt Pour, Gravity Pour and Semi-Permanent Molding
- Consistent and precise with excellent surface finish
- Superior mechanical properties



# LOW PRESSURE PERMANENT MOLD

A casting process better suited for symmetrical designs to meet our customers specifications.



- Increases mechanical properties and minimizes porosity in cylindrical parts.
- Minimal gating reduces casting finishing and increases yield



# CONSUMER PRODUCTS

Cast aluminum and precision-machined cookware that is the ultimate in quality, design and performance.



CHEF'S DESIGN<sup>®</sup>  
PREMIUM COOKWARE SINCE 1915  
[www.chefsdesign1915.com](http://www.chefsdesign1915.com)

- Pressure Cookers and Sterilizers
- Cookware and Can Sealers

**ALL AMERICAN<sup>®</sup>**  
MADE IN THE USA  
SINCE 1920

[www.allamerican1930.com](http://www.allamerican1930.com)



## ADDITIONAL SERVICES

We provide all of the necessary services to turn your casting into a line-ready part.

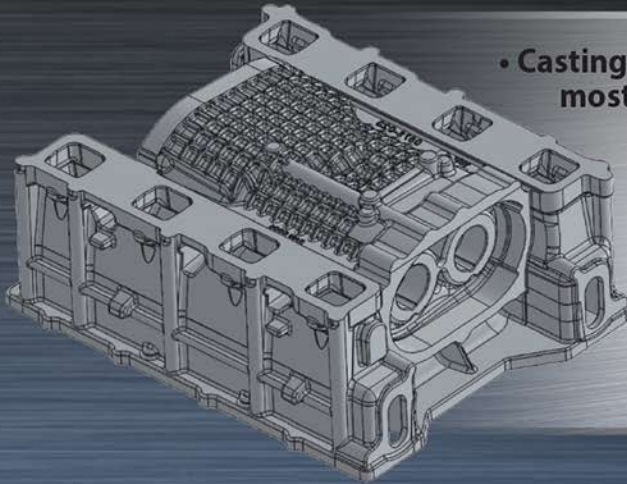


- Machining & Assembly
- Powder Coating & Painting
- Pressure Testing
- Impregnating
- HIP (Hot Isostatic Pressure)
- Chromate & Anodizing
- Polishing

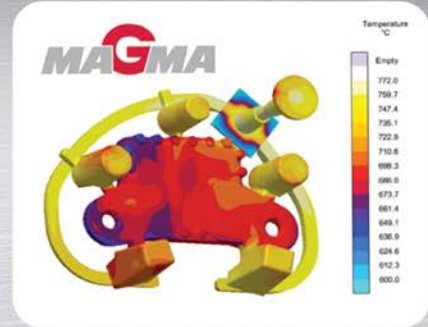


# ENGINEERING

Over 200 combined years of engineering expertise providing technical support, from design through production.

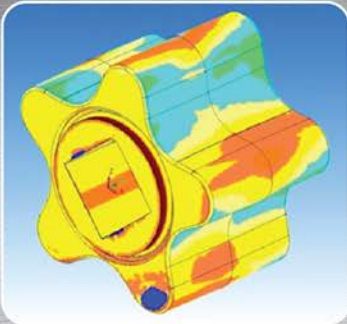


- Casting design reviews insure the most cost-effective methods
- Advanced CAD design for casting implementation
- MAGMA™ simulations minimize potential casting issues



# QUALITY

Consistency and repeatability are essential to manufacturing quality castings. Utilizing state-of-the-art inspection equipment insures that every casting meets and exceeds customer expectations.



- Real Time X-Ray
- Mechanical/Chemical Testing
- 3D Scanning
- CMM Inspection





Founded in 1909, Wisconsin Aluminum Foundry remains an industry leader in non-ferrous castings for over 100 years. Continually investing in our people and state-of-the-art technology enables Wisconsin Aluminum Foundry to meet and exceed customer's expectations. Our commitment to continuous improvement provides customers with the highest quality castings- on time, and within budget.

- Over 100 Years of Casting Experience
- Industry-Leading Lead Times and On-Time Delivery
- Aluminum and Copper Base Casting For Every Industry
- IATF 16949 : 2016      • ISO 9001 : 2015
- ISO 14001 : 2015      • ISO 13485 : 2016

